

# THE NEW ICONIC PCIe STEREO SOUND CARD

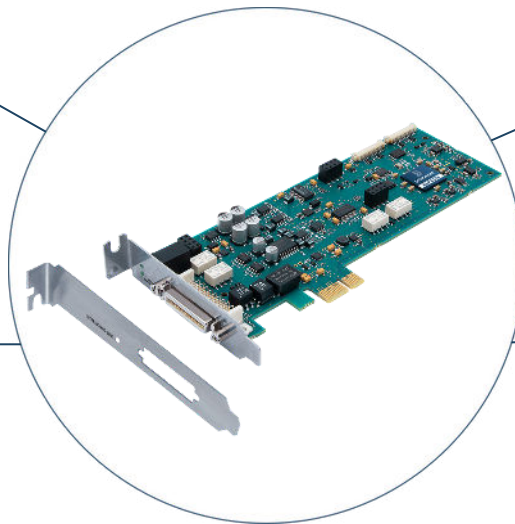
ALP221e is a versatile PCIe sound card for professional PC-based audio systems running under Windows and Linux environments.

Thanks to its reliability and stability, ALP221e matches with all applications such as broadcast (24/7/365), audio production, and outstanding audio quality measurements.

This card is ready for any challenge. It offers one stereo AES3 input and output.

A zero latency embedded mixer allows to route and mix audio channels from physical and software input devices to physical and software output devices.

Low profile card  
with 2 brackets



Connector for  
breakout cable or  
custom integration  
Headphones jack

1 stereo AES3 channel

Inter-board  
synchronization\*  
up to 8 ALP-X cards

## KEY FEATURES



For Windows  
and Linux



Iconic Rock-solid &  
life-long



Pristine Digigram  
sound quality



Multi-  
applications



Hiccup free  
reliability

*\*soon available*

## 1 FORMAT

### Dimensions

L: 168 mm x H: 69 mm x I: 20 mm  
 L: 6.6 inch; H: 2.7 inch; I: 0.8 inch

### Form Factor

Low profile  
 (standard and low profile brackets included)

### Expansion Bus

PCI Express™ (PCIe™) x1  
 (x2, x4, x8, x16 compatible)

## 2 DRIVERS

### Supported OS

Windows (from Windows 10 and Server 2016)  
 Linux (from Linux Kernel 4.9)

### Drivers

Windows: Asio, Wasapi/DirectSound  
 Linux: Alsa, Libgpiod

### One Driver Package

Multi-application and multi-card API available

## 3 CONTROL PANEL

### Digigram ALP-X ASIO Settings (On Windows)

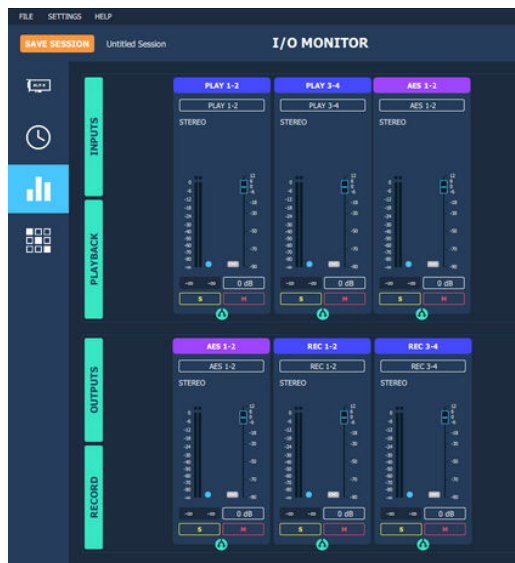
- Asio Control Panel: up to 8 ALP-X cards (intercard synchronization)
- Select I/Os used through ASIO (others can be used through Wasapi)

### Digigram ALP-X Manager (On Windows)

- A unique control panel for the whole ALP-X range
- Manages up to 8 ALP-X cards

### Main functions

Zero latency FPGA-based mixer  
 Adjustment of input and output levels  
 Mixing before monitoring and recording  
 Sync selection



## 6 SAMPLE FORMAT

PCM (8, 16, 24, 32 and 32 float bits), Float IEEE754

## 7 CABLE & CONNECTORS SPECIFICATIONS

### Breakout cable

Total breakout cable length: 1 m  
 XLRs for audio I/Os

### Inter board synchronization



## 4 HARDWARE SPECIFICATIONS

### INPUTS

#### Digital

1 stereo AES3 input  
 Adjustable digital gain: from -90 dB to +12 dB, in 0.1 dB steps  
 Sample rate (kHz): 32, 44.1, 48, 64, 88.2, 96, 128, 176.4, 192  
 Hardware Sample Rate Converter frequency ratio: from 1:8 to 7,5:1

### OUTPUTS

#### Digital

1 stereo AES3 output  
 Adjustable output gain: from -90 dB to +12 dB, in 0.1 dB steps  
 Sample rate (kHz): 32, 44.1, 48, 64, 88.2, 96, 128, 176.4, 192

## 5 MATRIX



## 8 SYNCHRONIZATION SOURCES

- Internal clock (kHz)  
 32, 44.1, 48, 64, 88.2, 96, 128, 176.4, 192
- AES3 with SRC
- Intercard clock\* (possibility to connect up to 8 ALP-X cards linked with an inter-board sync cable)